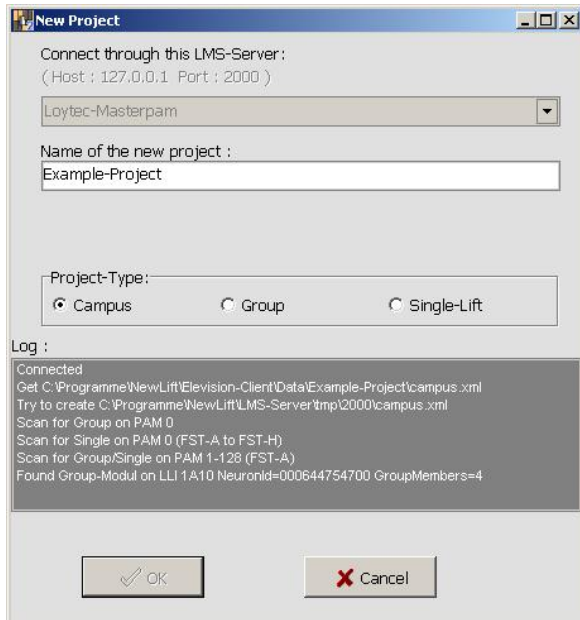


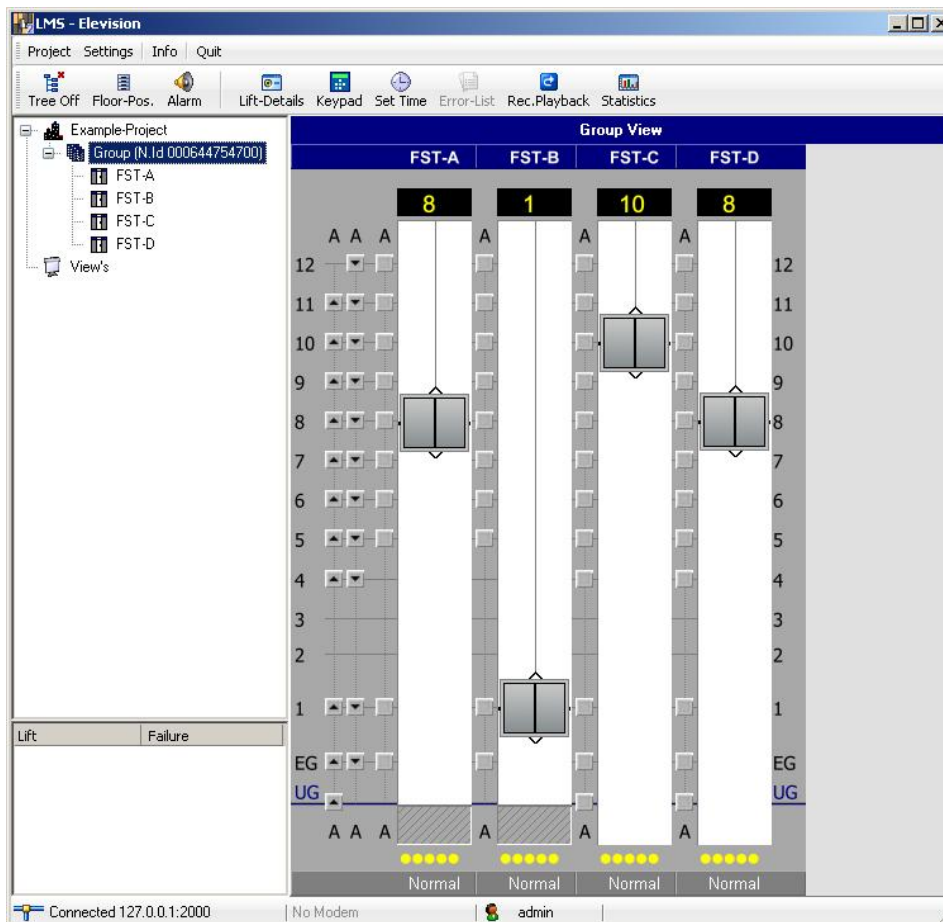
First steps with the Elevision-Client

Making a new Project

Menu: Project > New Project

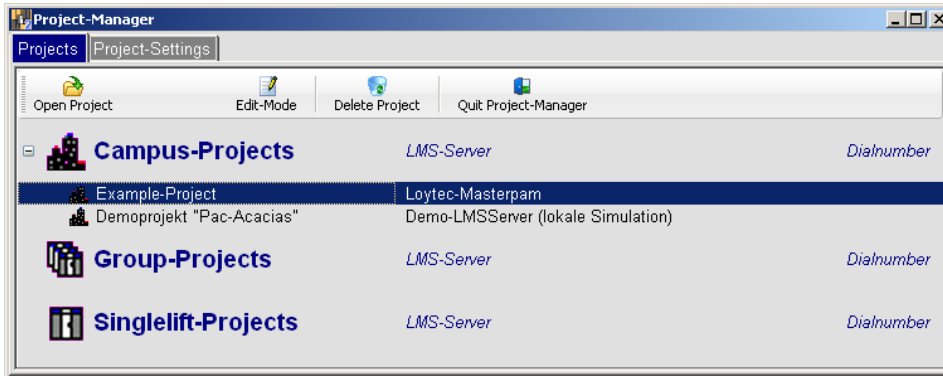


After selecting a LMS-Server and entering a Project Name and Type, Elevision will open a new Project and attempt to scan the LMS-Bus to find all connected lifts. In this example, a successful scan resulted in a 4-car group being found. Subsequently the lift group is shown in Elevision's Group View.

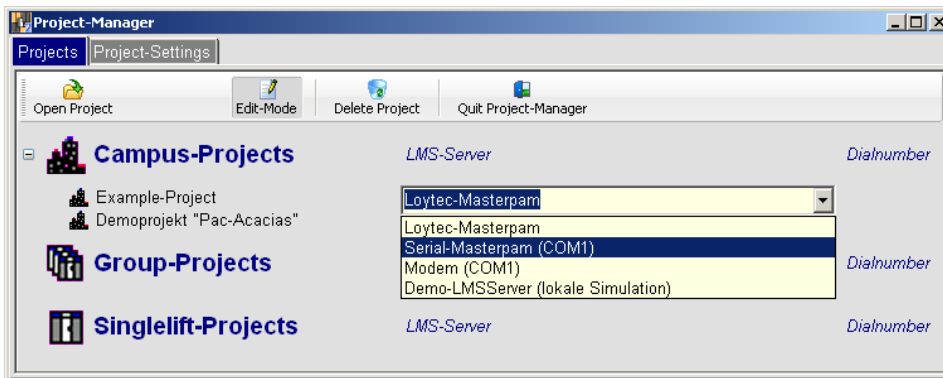


Project Manager

Menu: Project > Project Manager

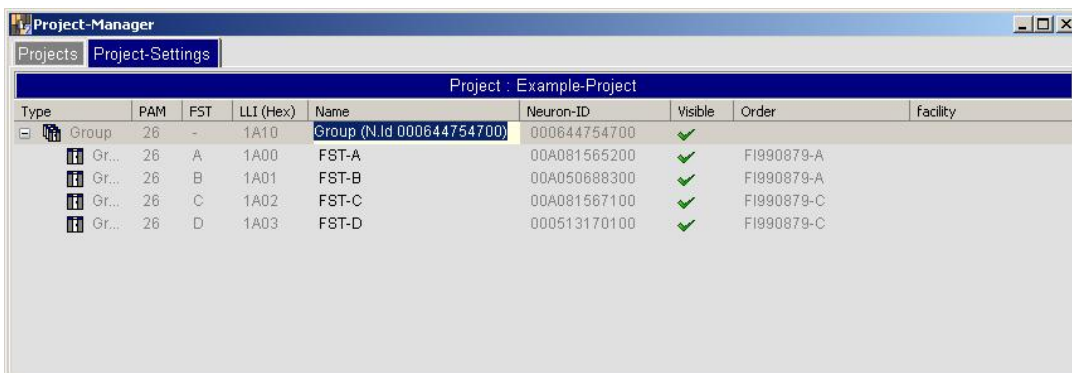


The Project Manager lists all current Projects. Using the Manager, these can be Opened, Deleted or Edited.



After selecting "Edit-Mode" the Project can be remaned, or the LMS-Server type can be changed (eg. To DEMO LMS-Server). Press the "Edit-Mode" button a second time to exit this mode.

From the Tab-Menu "Project-Settings" you can change the displayed name for a Lift or Lift-Group. Additionally you can make an individual lift or lift-group invisible for this Project by clicking on the "Tick" in the "Visible" column.



Elevision-Settings

Menu > Settings > Elevision Settings

Basic Program Settings:

The screenshot shows the 'Elevision-Settings' dialog box with the 'Basic Settings' tab selected. The dialog has three tabs: 'Basic Settings', 'Available LMS-Server(s)', and 'User Administration'. The 'Basic Settings' tab contains the following options:

- Show Splash-Screen on startup: ☒
- Load last opened project: ☒
- Dial immediately after open a modem-project: ☐
- Alarmsound critical failures: ☒ Alarmsound:
- Repeat Alarmsound: ☐
- Show Popup-Window on critical failures: ☐
- Use built-in User-Administration: ☐
- Recording: Do fetch ALL records (do not set this on slow networks): ☒
- Language:

At the bottom of the dialog are 'OK' and 'Cancel' buttons.

The available LMS-Servers can be managed from this menu:

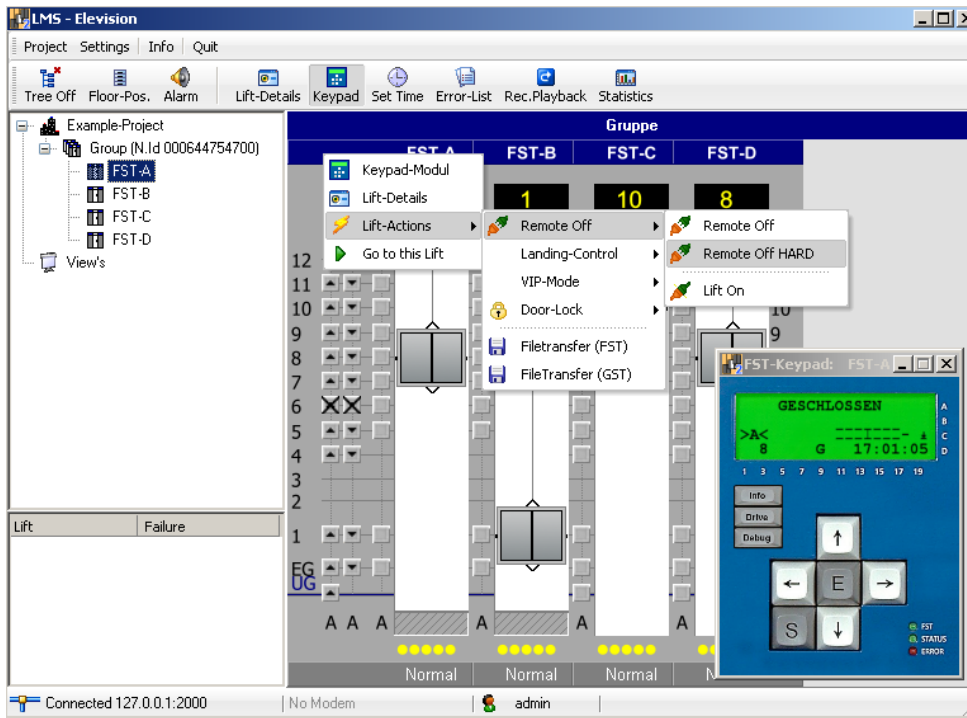
The screenshot shows the 'Elevision-Settings' dialog box with the 'Available LMS-Server(s)' tab selected. The dialog has three tabs: 'Basic Settings', 'Available LMS-Server(s)', and 'User Administration'. The 'Available LMS-Server(s)' tab displays a table of available servers:

Host (IP)	Port	Modem (on Server)	Name
127.0.0.1	2000	-	Loytec-Masterpam
127.0.0.1	2001	-	Serial-Masterpam (COM1)
127.0.0.1	2011	Modem	Modem (COM1)
127.0.0.1	3000	-	Demo-LMSServer (lokale Simulation)

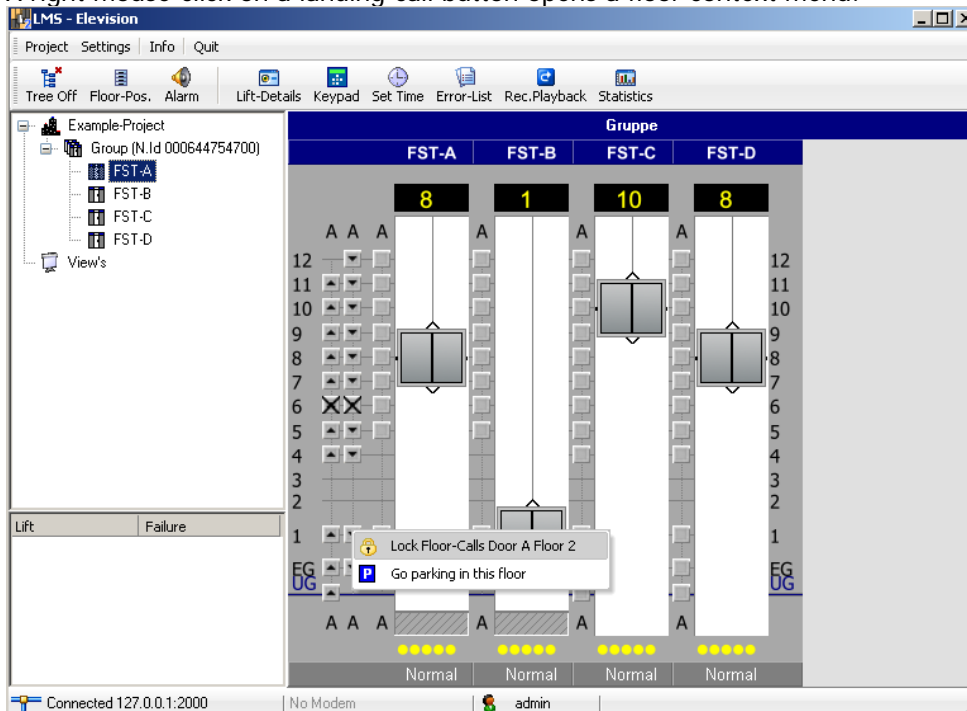
At the bottom of the dialog are 'OK' and 'Cancel' buttons. Below the table, there are icons for 'Add Server' (a green plus sign) and 'Delete Server' (a red minus sign).

General functions in the Main Window

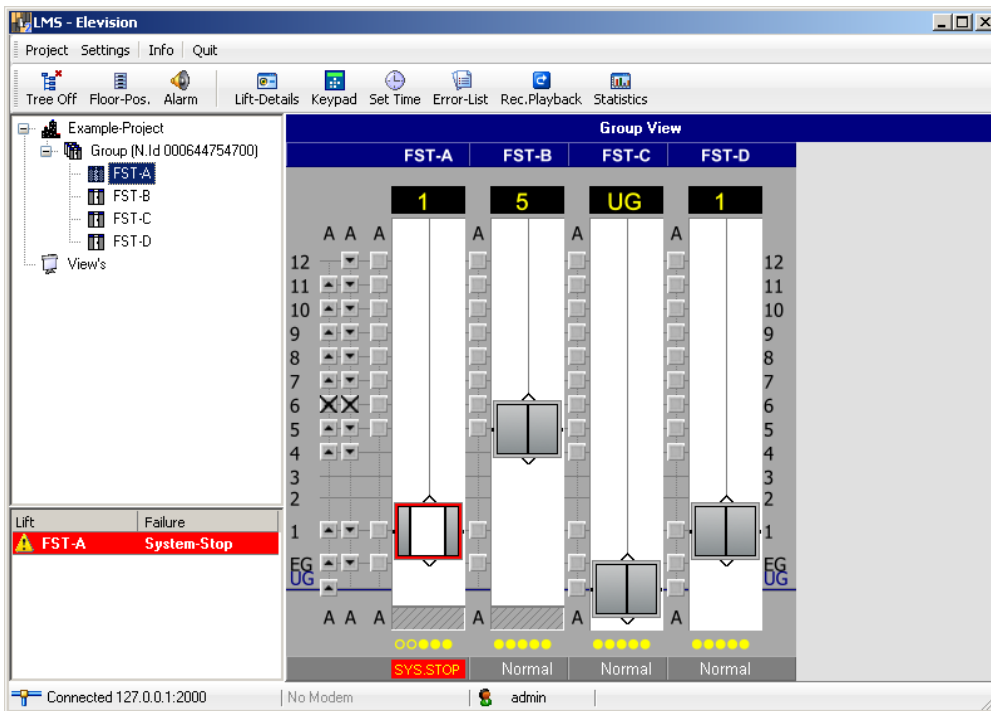
The Toolbar offers quick access to the most used functions. Most of these options lead to the opening of a new window, eg. click on "Keypad". After clicking a second time the window will close again. Some of these functions operate in certain cases only on the Lift or Lift-Group currently selected on the Tree Menu in the lefthand pane. For example, use the Tree selection to change the lift being examined in the Statistic or Error-List menus. More options are available by clicking on the Title-Bar of the Lift graphic itself (Lift-Name), which opens a Context-menu offering functions that will operate only on this lift:



A right mouse-click on a landing-call button opens a floor context menu:



If a lift enters a critical condition (System-Stop, DRM, Fire etc.) during running operation, this will be shown immediately in the bottom-left pane. Additionally an acoustic Alarm will sound, which can be turned off using the "Alarm" button in the Toolbar.



Views

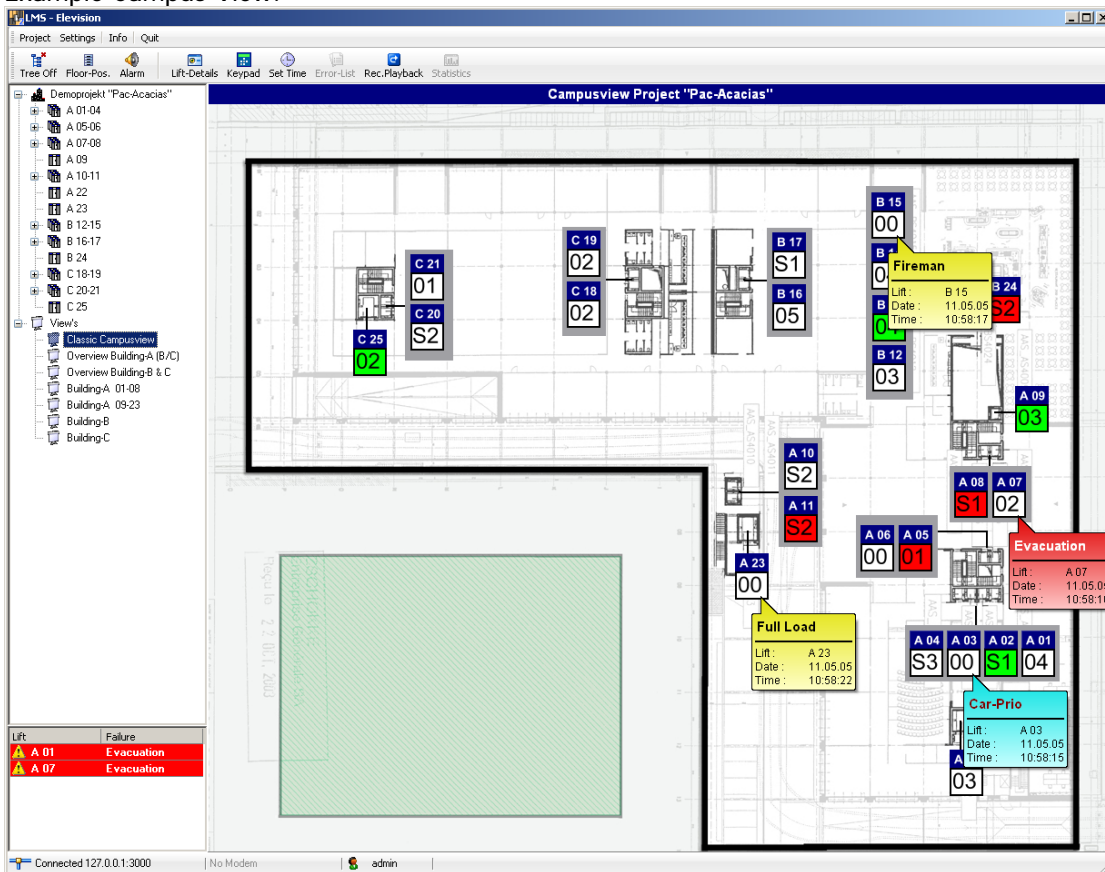
Elevison gives you the possibility of generating different Views to display selected areas of the Project. A single View contains any number of the Project lifts in the full Side-View or reduced Plan-View (Campus Display). A bitmap graphic can be loaded as a background, which is useful for complementing a Campus View.

Generating Views require some patience and time – the methods are quite wide-ranging, and can only be described here briefly.

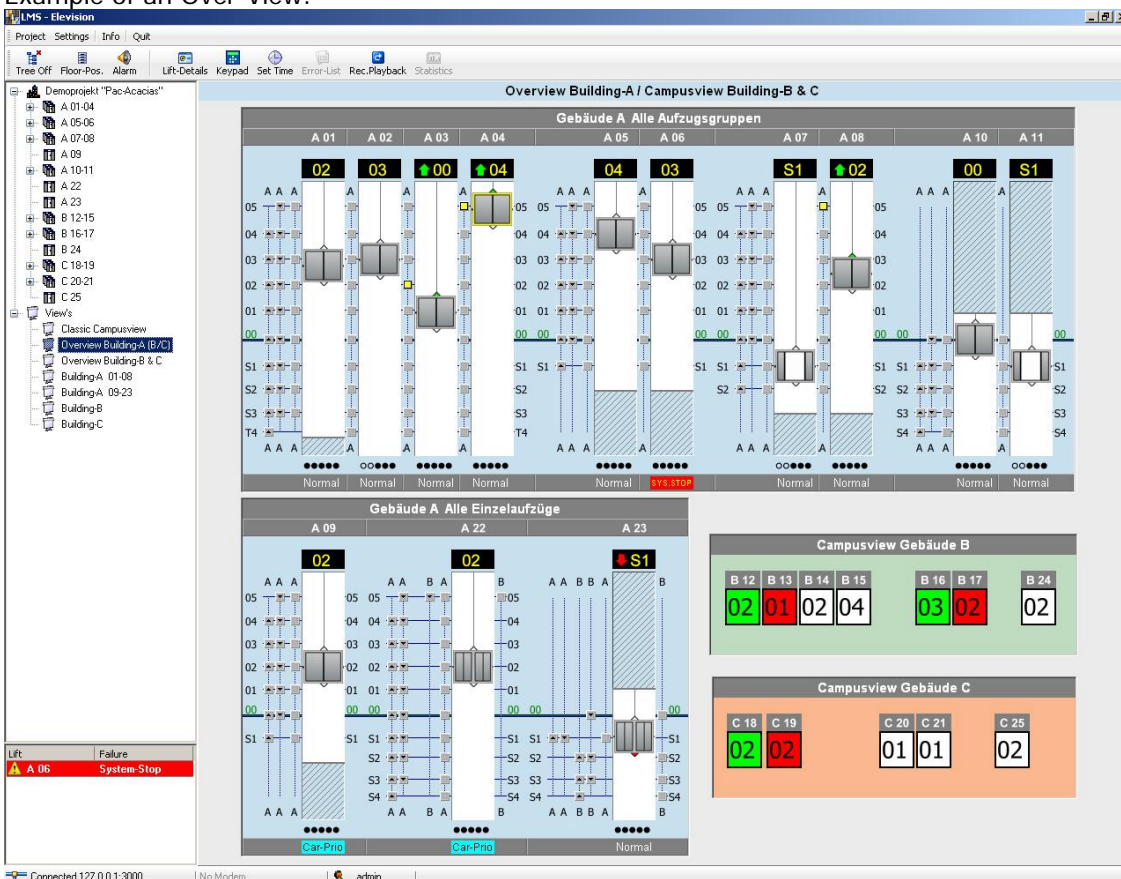
Views can be created and modified using the View-Edit mode in Elevison. To create a new empty View, first make sure the "Views" branch in the lefthand Tree-menu is selected. Then select "Settings -> View-Edit Mode" from the menu. After choosing between "Elevator-Image" or "Campus-Image", simply "drag and drop" those lifts you wish to have in this view from the Tree-display. After clicking on the Lift Title-bar, this will turn Red. The attributes of the red-marked lifts can now be defined with the "Sizing-Mode" or "Configure" for moving and aligning options. Logical lift-groups can be formed by inserting a "Elevator-Box". Similarly the Title-bar of an Elevator-Box can be marked red allowing for further "Configure" operations.

Save a View by selecting the "Views" branch in the Tree-menu again, and then using the "Save-View" button. Finally, return to the normal display by selecting "Exit View-Edit Mode". You can rename a View easily from the Tree-menu by clicking and holding for a short while (<=3sec) until the name display changes into an edit mode.

Example Campus-View:

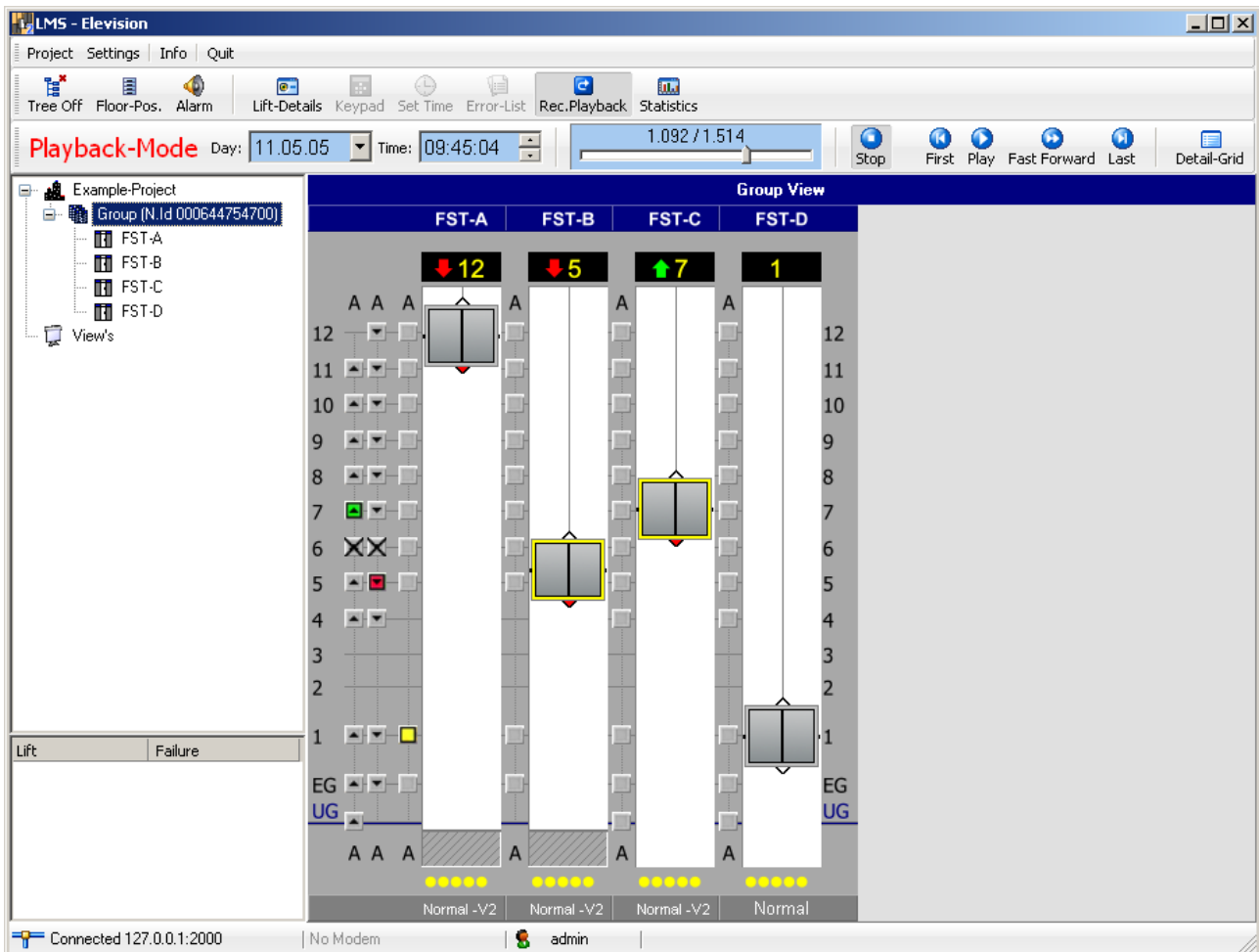


Example of an Over-View:



Recording Playback-Mode

The Recording-Playback-Mode is used to re-run recorded sequences captured by the LMS-Recorder. In this mode, the Views are totally disconnected from the LMS-Server's real-time monitoring data, and display the recorded data only. The recorded data comes from the Firebird Database. To return back to the real-time display, you must first leave the Playback-Mode. When the "Lift-Details" button in the Tool-bar is activated, the Lift-detail option can also be used to display the stored lift details time-synchronised with the playback.



In order to playback, you must first select a day from the Calendar. Optionally, you can also define an exact time period within that day. Now control the playback using the "Play" or "Fast-Forward" buttons. The field with the slider control shows how much recorded data in total is available. You can position the slider yourself to move any time position within the recording.

The lefthand Tree-menu serves a filter. If a Lift-Group is currently selected, all Recorder data for that entire group will be shown. If a single group member is selected – then only the data for this lift will be shown.